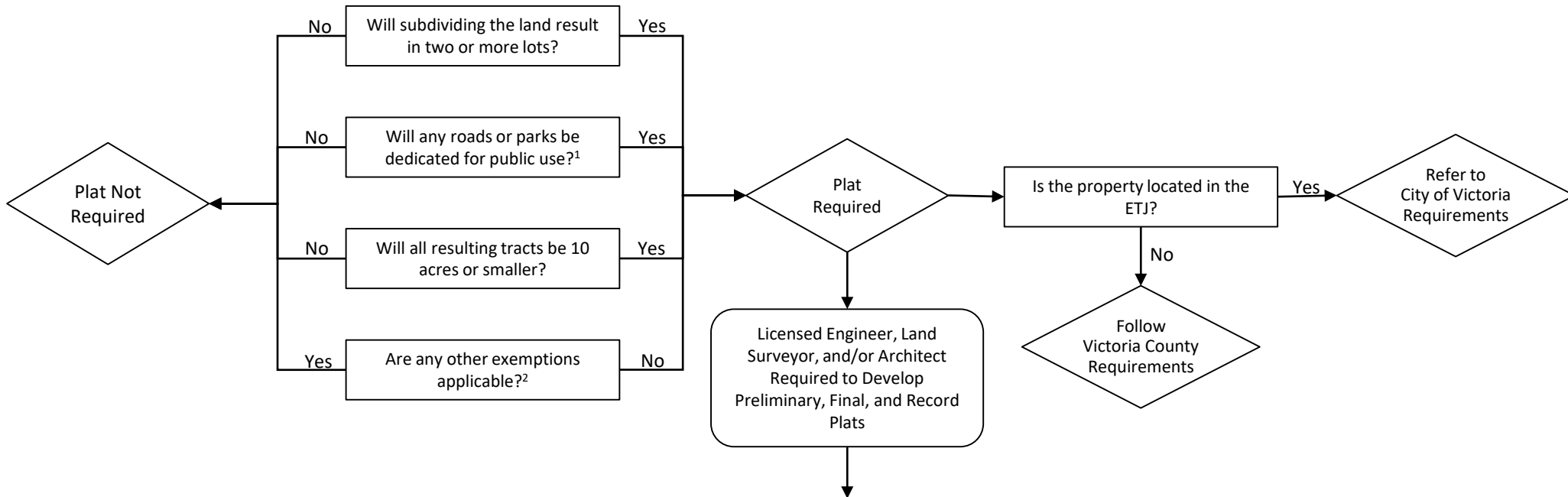




VICTORIA COUNTY
PLAT / CONSTRUCTION PLAN SUBMITTAL OVERVIEW
 DECEMBER 14, 2018



Subdivisions of land requiring a plat must provide³ :

1. Water / Wastewater Service Plan certified by a Professional Engineer or Professional Geoscientist
2. Drainage Infrastructure designed and/or evaluated by a Professional Engineer
3. Public Roadway Design Report certified by a Professional Engineer (if roads are proposed)
4. Erosion and Sediment Control Measures certified by a Professional Engineer

This overview is intended to provide general guidance on several components of the plat and plan review process at Victoria County. It is not intended to be an exhaustive assessment of County requirements. The Victoria County Development Standards Manual must be consulted for requirements associated with plat and plan submittals.

The Development Standards Manual may not cover all permits required by Local, State, or Federal Law. Therefore, it is highly recommended that a licensed professional be consulted to determine applicable requirements of the Development Standards Manual and other laws.

In the event this flowchart is not in agreement with the latest version of the Development Standards Manual, the Development Standards Manual shall control.

NOTES:

1. All roads associated with subdivisions of land are considered public roads, including in the event the road is not intended to be owned, operated, or maintained by Victoria County.
2. See Section 1.C.2-3 of the Development Standards Manual for allowable exemptions.
3. The listed requirements are provided as a general overview and do not constitute all required items. Please refer to the Victoria County Development Standards Manual for additional requirements.